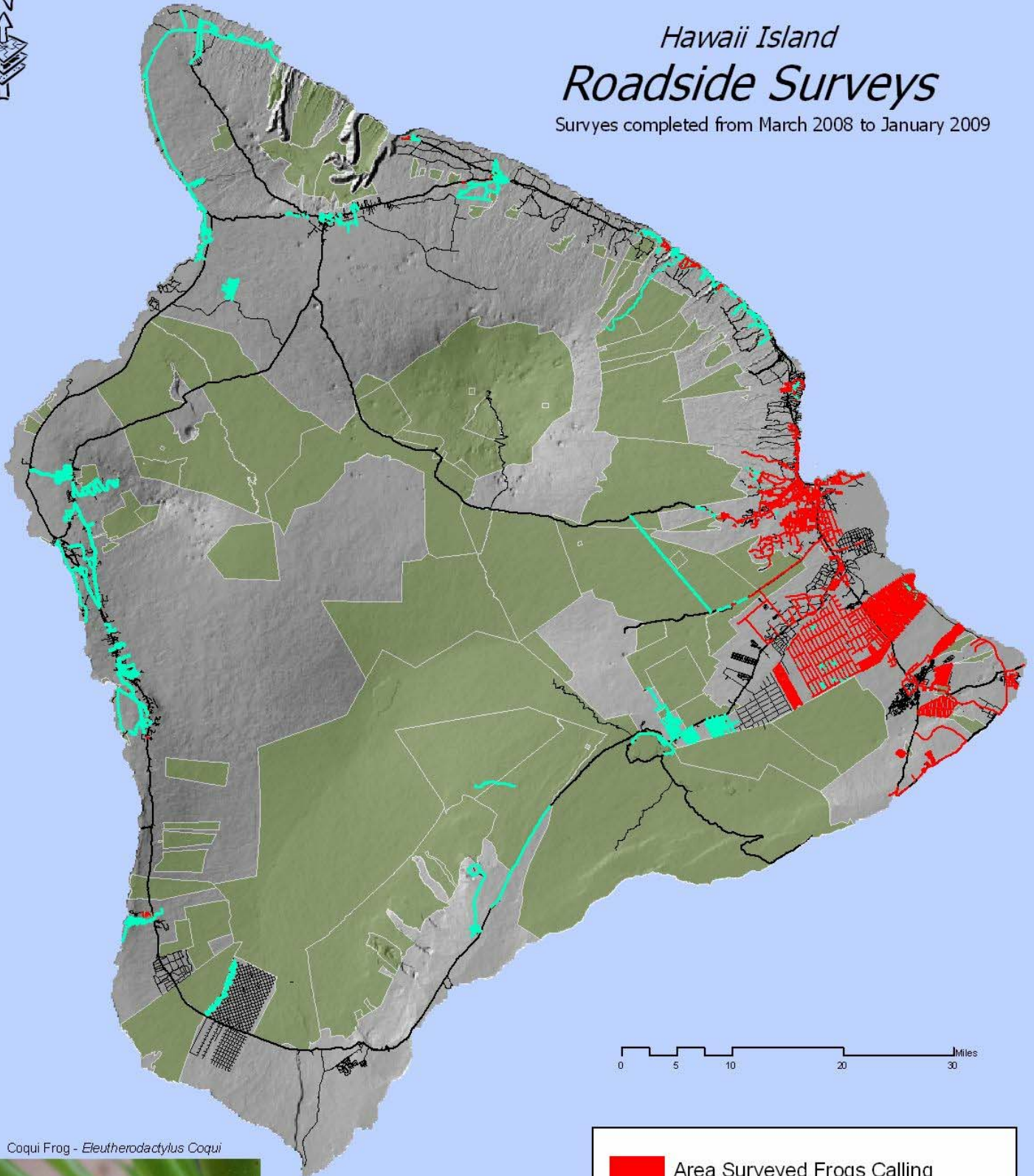




Hawaii Island Roadside Surveys

Surveys completed from March 2008 to January 2009






Coqui Frog - *Eleutherodactylus Coqui*



Photo by Arnold Hara, UH CTAHR

Distribution data based on Night surveys conducted by BIISC & USDA-WS

Source: BIISC, 2008-2009
Data: Surveys compiled by BIISC and USDA-WS
Datum/Projection: NAD 83, UTM Zone 5N
Map prepared by: R. Hamilton 01/2009
adapted from C. Rygh, 2005; P. Graves 9/2007

-  Area Surveyed Frogs Calling
-  Area Surveyed No Frogs Calling
-  State & Federal Land Reserves

